

## Track & Trace Solution



# Track and Trace

With increasing needs to enhance channel efficiency, regulatory compliance, prevention of theft and counterfeits, businesses are looking to integrated track and trace solutions as their answer.

Barcoding is the most popular track and trace solution, widely used by various industries such as medical, manufacturing, food & beverages and many more.

## Benefits of Track & Trace

- Enhance top and bottom line
- Ensure regulatory compliance
- Prevent counterfeits and theft
- Increase savings over time
- Allow sharing of timely and accurate information
- Gather business intelligence (i.e. best selling product)
- Reduce paper work and increase work efficiency

## 1D or 2D Barcode?

- 1D linear barcode has only small alphanumeric data capacity



Code 39



Code 128

- 2D matrix barcode can hold 100 times more data than 1D barcode within the same space and is readable at almost any angle of rotation with an imaging scanner. It can be deployed on a variety of medias, including shiny or metal surfaces.



Data Matrix



QR Code

1

## Identify the need

Determine the objective and the item / product / information that you need to track.

"I like to know which batch of medicine has expired."



2

## Creating a barcode label

In order to embed the required information into the barcode and create barcode labels for tracking purpose, you need:

- To determine required details
- An accurate database
- Designing software
- Labeling materials
- Printing systems

### Database



Determine information required for tracking purposes

3

## Applications

Apply the printed barcode label to the designated item / product / location.

Barcode labels may be used in nearly all industries from medical, manufacturing, transportation, electronics, electrical and many more.

### Retail



Pricing embedded in barcode to facilitate sales transactions

### Warehousing



Inventory management efficiency - i.e. tracking of storage location and stock count

4

## Retrieving information from barcode labels

By using barcode scanners, we will be able to retrieve the embedded information from the barcode labels.



Code Reader™ 3500

5

## Tracking and tracing

The retrieved information from the barcode label should be uploaded onto the database for updating, sharing and archiving purposes.



Code Reader™ 3500 capturing and decoding the barcode label





"How do I know if I have the right cargo onboard?"

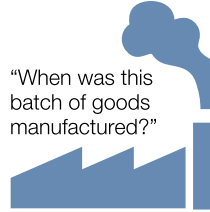
"I need to know if the goods are delivered to the right location."



"I need to ensure that counterfeits are not taking my revenue away."



"When was this batch of goods manufactured?"



"How can I find out if the patient has been given the right medication?"

"What are the contents in this container since it was stored a month ago?"



### Design a label



Design your barcode label using Brady's Codesoft™ software (see page 3) that comes with easy-to-use templates.

### Select label materials



Different application requires different labeling materials (see page 4-8). Brady offers a huge variety of labeling materials to suit your specific needs.

### Print the label



Print your barcode labels with Brady's industrial printers (see page 9-11) for on-demand or manufacturing identification needs

### Barcode label samples



### Hospitals



Barcode on patient's wrist tag ease the retrieval of patient's information

### Laboratory



Information on vial's contents can be traced even after months of storage

### Distribution & Logistic



Ability to track product movement, ensuring that it goes to the right location

### Manufacturing



Production information such as serial numbers, batch information, date manufactured can be stored

Brady's barcode scanners boost superior advantages to ensure quicker and easier scanning of barcodes, to meet the needs of a variety of tracking applications. (see page 12 – 14)



### Database



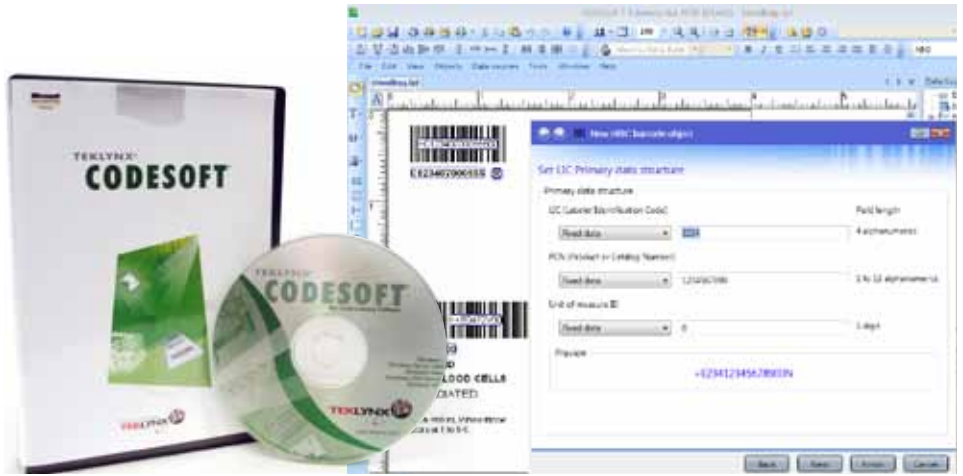
### Retrieve information from computer

Information retrieved may be communicated to the database on real-time or stored in the scanner temporarily.



Information captured may be shared among different teams such as purchasing, warehousing, distribution, retail stores, finance for tracking, tracing, data analysis, inventory management, etc

**CODESOFT™  
SOFTWARE**



**CODESOFT™ Label Design Software**

CODESOFT™ is an advanced label design and integration software that offers unmatched flexibility, power, and support – making it the best barcode software choice for label printing in enterprise environments. With CODESOFT™, you can easily integrate label printing and RFID technology into your business process, increasing both efficiency and control. Whether your goal is managing assets and resources, controlling distribution channels and stock levels, tracking documents and RFID tags, or managing data records, CODESOFT™ provides a solution for your organization’s most advanced barcode and RFID labeling projects.

| Catalog # | Description          |
|-----------|----------------------|
| 118120    | Codesoft 10 Pro. USB |
| 118119    | Codesoft 10 Ent. USB |

Upgrades, USB-Keyed licensed and add-on software parts available at [www.BradyID.com/tekllynx](http://www.BradyID.com/tekllynx)

**Features & Benefits**

- Flexible label design for everything from simple to advanced labels
- Ability to integrate label printing seamlessly into existing systems
- 40+ barcode symbologies for printing any type of label
- Advanced database connectivity for pulling data from virtually any source labels
- Wizard-driven interfaces for easy creation of labels and accompanying variables

| Software                        | Pro Version | Enterprise Version |
|---------------------------------|-------------|--------------------|
| Print-only version              |             | ✓                  |
| UNICODE                         | ✓           | ✓                  |
| Network Version                 |             | ✓                  |
| Graphic formats Import          |             | ✓                  |
| Color Support                   |             | ✓                  |
| Color Graphic Reduction         | ✓           | ✓                  |
| Graphic Barcodes                | ✓           | ✓                  |
| Native Printer Barcodes         | ✓           | ✓                  |
| Label Preview                   |             | ✓                  |
| Multi-level Password Protection |             | ✓                  |
| Multilingual Support            |             | ✓                  |
| Export label as a graphic       |             | ✓                  |
| Number of connected printers    | 3           | Unlimited          |

## LABEL MATERIALS

# BRADY LABELS & WORKHORSE™ SERIES



Brady's labels identify and protect premises, products & people. Brady offers complete label identification solutions that help companies improve productivity, performance, safety and security using our high-performance blank labels for a variety of applications.



## WorkHorse™ Series Harsh Environment Labels

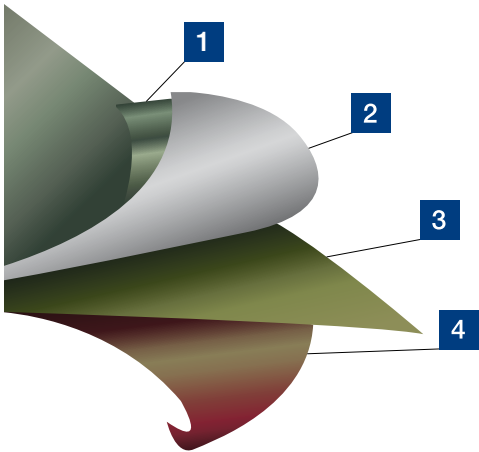
- Engineered for the harshest environments
- Durable and heavy-duty to keep the label adhered to smooth surfaces
- Survives harsh chemicals, abrasion and temperatures
- UL, cUL, CSA, RoHS and REACH compliant

| Brady Material # | Description                                     | Applications   | Rec. Ribbon                      |
|------------------|---|--|----------------------------------|
| B-103            | Clear Polyester Overlaminating Tapes            | For clear protective overlamine for most standard brady label materials  |                                  |
| B-423            | Glossy White Polyester Label                    | Electronic PCB and component identification, bar code label and rating plates and solar panel identification               | R6000<br>R4400<br>R4900<br>R6200 |
| B-425            | Polpropylene Label                              | Component, equipment, general identification barcoding, asset tracking, and rating plates                                  | R4300<br>R6200<br>R6400<br>R4500 |
| B-430            | Glossy Clear Polyester Label                    | Rating and serial plates using alphanumerics, barcodes, graphic symbols and logos that require name plate quality.         | R6000<br>R4400<br>R4900<br>R6200 |
| B-439            | Colored Vinyl Label                             | Finished product identification, rating plates and general purpose identification  | R4900<br>R6000<br>R4400          |
| B-459            | Matte White Polyester Label                     | Topside of printed circuit boards and rating plates that utilize high quality/density alphanumerics, barcodes and graphics | R4900<br>R6000<br>R4400          |
| B-473            | Glossy White Static Dissipative Polyester Label | Printed circuit board and electronic component post-process labeling   | R6000                            |
| B-488            | Matte White Polyester Label                     | General and bar code labeling  | R4300<br>R6200                   |
| B-966B           | Clear Polyester Overlaminating Tape Label       | For overlamination   |                                  |

## Applications

High quality/ density barcoding, product, and component identification, rating and serial plates, asset and inventory tracking and general identification

## Label Components



**1** Topcoat (If applicable)

**2** Facesheet/ Film

**3** Adhesive

**4** Liner



**METALABEL™  
SERIES**



**MetaLabel™ Series**  
Metallized Labels

- Metallic appearance - nameplate quality
- True metal films for spec compliance
- Superior resistance to harsh chemicals and abrasion
- Meet certain military, SAE and other specifications

| Brady Material # | Description  | Applications   | Rec. Ribbon                      |
|------------------|--|--|----------------------------------|
| B-413            | Metallic Appearing, Non-Metal Polyester Label Stock With Acrylic Adhesive      | Electronic PCB and component identification, bar code label and rating plates  | R6000<br>R4400<br>R4900<br>R6200 |
| B-428            | Metallized Polyester Label   | Rating and serial plates, that utilize barcodes, alphanumerics, graphic symbols and logos and require nameplate-like quality | R4300<br>R6200                   |
| B-434            | Gloss Metallized Polyester Label   | Rating plate and general purpose labeling on textured surfaces   | R4900<br>R6000                   |
| B-435            | Gloss Metallized Polyester Label   | Rating plate and general purpose labeling  | R4900<br>R6000                   |
| B-480            | Metallic Appearing, Non-Metal Polyester Label Stock With Rubber Based Adhesive | Bar code labels, serial and rating plates requiring nameplate-like quality   | R6000<br>R4400<br>R4900<br>R6200 |
| B-486            | Metallized Polyester Label   | Rating and serial plates that utilize barcodes, alphanumerics, graphic symbols and logos and require nameplate-like quality  | R4300<br>R6200                   |



**Applications**

High quality/density barcode labels, asset identification and serial and rating plates requiring nameplate-like quality



**ULTRATEMP™  
SERIES**



**UltraTemp™ Series**  
High Heat Labels

- Survives high heat (500°F) and harsh chemicals
- Performs in reflow wave solder and board washing
- ESD and auto-apply equipment available

| Brady Material # | Description   | Applications   | Rec. Ribbon |
|------------------|---|--|-------------|
| B-426            | Matt Amber Polyimide Label                                  | Printed circuit board and electronic component preprocess labeling   | R4300       |
| B-436            | Removable Polyimide Label                                   | Temporary preprocess labeling on printed circuit board, E-PROM and electronic component that require clean removability of the label | R4300       |
| B-457            | Glossy White Polyimide Label                                | Printed circuit board and electronic component preprocess labeling   | R6000       |
| B-476            | Glossy Light Green Polyimide                                | Printed circuit board and electronic component preprocess labeling   | R6000       |
| B-477            | Glossy White Static Dissipative Polyimide Label             | Printed circuit board and electronic component preprocess labeling   | R6000       |
| B-478            | Glossy White Low Profile Static Dissipative Polyimide Label | Printed circuit board and electronic component preprocess labeling   | R6000       |
| B-479            | Matte White Low Profile Static Dissipative Polyimide Label  | Printed circuit board and electronic component preprocess labeling   | R6000       |
| B-487            | Matte White Polyimide Label                                 | Printed circuit board and electronic component preprocess labeling   | R6000       |
| B-497            | Matte White Low Profile Polyimide Label                     | Printed circuit board and electronic component preprocess labeling   | R6000       |

**Applications**

Printed circuit board identification or any high heat applications



# CLEANLIFT™ SERIES & DEFENDER™ SERIES



## CleanLift™ Series Removable Labels

- Durable and long-lasting performance
- Clean and easy removal
- Removes without scraping or surface damage
- Excellent solvent and heat resistance

| Brady Material # | Description                             | Applications  | Rec. Ribbon             |
|------------------|---|---|-------------------------|
| B-433            | Glossy White Polyester Label            | Alphanumeric and barcode applications such as electronic component marking and general purpose applications that require good solvent resistance, heat resistance, and clean removability | R6000<br>R4900<br>R6200 |
| B-449            | Removable Polypropylene Label           | Temporary labeling applications requiring solvent resistance and print performance coupled with clean removability  | R4300<br>R6200          |
| B-498            | Repositionable Coated Vinyl Cloth Label | Wire, cable, and general identification numbers, letters and conduit and voltage markers  | R4300<br>R6000<br>R6200 |



### Applications

Identifying electronic and other components, work in process identification and general purpose applications



## Defender™ Series Tamper Evident Labels

- Irreversible, visible evidence of tampering
- Protects warranty fraud, product tampering or asset theft
- Chemical, temperature and abrasion resistance

| Brady Material # | Description  | Applications  | Rec. Ribbon    |
|------------------|--|---|----------------|
| B-351            | Tamper - Resistant White Vinyl Label                   | Rating and serial plates that require high performance and resistance to product tampering                              | R6200<br>R6000 |
| B-352            | Tamper - Resistant Metallized Vinyl Label              | Rating and serial plates that require high performance and resistance to product tampering                              | R6000<br>R4400 |
| B-367            | Custom Footprinting Tamper-Evident Polypropylene Label | Customized rating plates, tamper seals, or package closures that require high performance and evidence of label removal | R6000          |
| B-438            | Tamper Evident Matte Metallized Polyester Label        | Rating and serial plates that require high performance and evidence of label removal                                    | R4300<br>R4500 |
| B-7546           | Tamper - Evident White Polyester Label                 | Rating and serial plates that require high performance and evidence of label removal.                                   | R6000<br>R4400 |
| B-7566           | Tamper - Evident Clear Polyester Label                 | Material that requires high performance and evidence of label removal.  | R6000<br>R4400 |
| B-7576           | Tamper - Evident Metallized Polyester Label            | Rating and serial plates that require high performance and evidence of label removal                                    | R6000<br>R4400 |

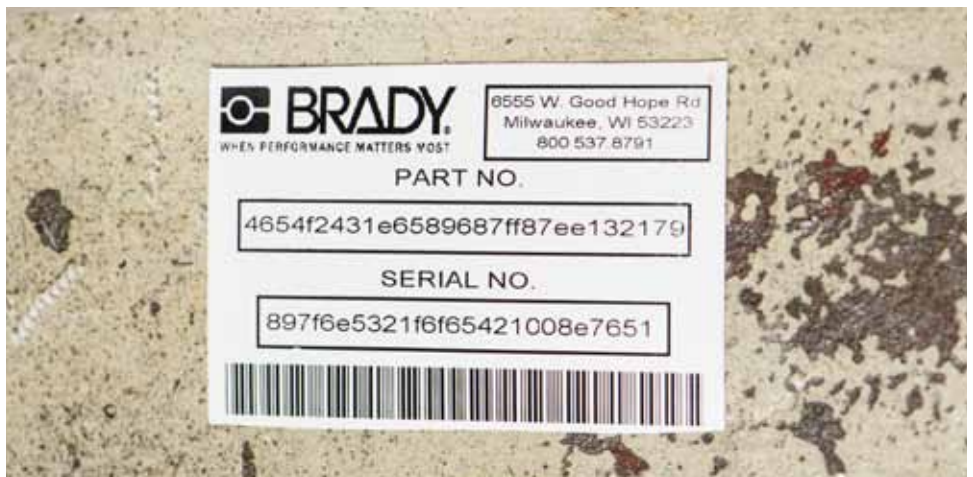


### Applications

Product and component identification, rating and serial plates



**TOUGHBOND™  
SERIES &  
VISALERT™  
SERIES**



**ToughBond™ Series**  
Aggressive Adhesive Labels

- Permanent identification and outstanding adhesion for up to 3x adhesion values
- For rough or powder/ oil/ grease covered surfaces
- No extensive surface preparation needed

| Brady Material # | Description                  | Applications  | Rec. Ribbon             |
|------------------|------------------------------|---|-------------------------|
| B-422            | Glossy White Polyester Label | Electronic pcb and component identification, bar code label and rating plates and solar panel identification      | R6000<br>R4400<br>R4900 |
| B-432            | Glossy Clear Polyester Label | Rating and serial plates using alphanumerics, barcodes, graphic symbols and logos that require name plate quality | R6000<br>R4400<br>R4900 |
| B-483            | Glossy White Polyester Label | For high adhesion to textured metals and low surface energy plastics  | R6000<br>R4400<br>R4900 |
| B-484            | Flexible Polyester Label     | For high adhesion to textured metals, low surface energy plastics, as well as angled and curved surfaces          | R6000<br>R4400<br>R4900 |
| B-489            | Matte White Polyester Label  | For high adhesion to textured metals and low surface energy plastics  | R4300<br>R6200          |



**Applications**

Low surface energy applications, product and component identification, high-quality/density barcode labels, asset and inventory tracking, rating plates and general identification

**VisAlert™ Series**  
Indicating Labels

- Immediate visual indication of water or heat exposure without triggering false positive
- Continually monitor product, components or equipment
- Records a permanent, irreversible reading for the highest temperature attained
- Helps prevent frequent breakdowns and shortened equipment life due to overuse or exposure to harmful elements, as well as prevent fraud or product misuse.

| Brady Material # | Description  | Applications   | Rec. Ribbon             |
|------------------|--|--|-------------------------|
| B-350            | Aqualert™ Water Indicating Polyester/ Paper Laminate Label | Locations where clear evidence of water intrusion is desired for controlling invalid warranty claims, failure analysis, design assistance or trouble shooting (service and repair) | R6000<br>R4900<br>R4400 |
| B-7511           | Irreversible Temperature Labels For Low Temperatures       | Temperature indicating labels for permanent record of the highest temperature reached. Temperature range covered is 37°C/ 99°F to 143°C/ 289°F                                     |                         |
| B-7512           | Irreversible Temperature Labels For Mid Temperatures       | Temperature indicating labels for permanent record of the highest temperature reached. Available ranges : 149°C / 300°F - 177°C/ 350°F and 182°C/ 360°F - 210°C/ 410°F.            |                         |



**Applications**

Motors, gear boxes, electrical equipment and product or component monitoring

# THERMAL TRANSFER PRINTERS

## BENCHTOP INDUSTRIAL PRINTERS

Brady's Benchtop/Desktop industrial printers offer a full range of capabilities and options to provide high quality, cost-effective printing on a complete line of labeling materials



| Printers                      | BBP®11 Label Printer   | Brady IP™ Thermal Transfer Printer   | Bradyprinter™ PR Plus Printer  | BBP®16 Label Printer   |
|-------------------------------|--|--|--|--|
| <b>Description</b>            | Brady's BBP®11 Label Printer is an entry level printer with high speed print, an extended list of labeling options and a simple, user-friendly design. | Brady's IP™ Thermal Transfer Printer is the smart solution for high-performance printing. It is a fully integrated, easy-to-use printer, material, and software system with the Smart Cell technology that identifies your label material and automatically matches the ribbon for improved productivity and printing. | Bradyprinter™ PR Plus Printer is a high- performance printer for your cable identification needs. This heavy duty industrial printer is designed to last in industrial environments. | Brady's BBP®16 Label Printer offers its users a total labeling solution at an affordable price with its leading range of labeling materials, specialized materials and specialized software. |
| <b>Print Technology</b>       | Thermal Heat Transfer  | Thermal Heat Transfer  | Thermal Heat Transfer  | Thermal Heat Transfer  |
| <b>Resolution</b>             | 300dpi   | IP300: 300 dpi<br>IP600: 600 dpi   | BP PR300+ / 360+: 300 dpi<br>BP PR600+: 600 dpi  | 300 dpi or 600 dpi   |
| <b>Speed</b>                  | Up to 3"/s   | 300 dpi: Up to 8"/s<br>600 dpi: Up to 4"/s   | Up to 9.8"/s   | Up to 4"/s   |
| <b>Max Labels per Day</b>     | 1000pcs  | 5000pcs  | 7000pcs  | 5000pcs  |
| <b>Min Label Width</b>        | 1"   | 1"   | BP PR300+ & 600+ : 1"<br>BP PR360+ : 2"  | 1"   |
| <b>Max Label Width</b>        | 4.16"  | 4.16"  | BP PR300+ & 600+ : 4.7"<br>BP PR360+ : 7.06"   | 4.09"  |
| <b>Min Label Length</b>       | 0.25"  | 300 dpi: 0.25"<br>600 dpi: 0.125"  | 0.2"   | 0.157"   |
| <b>Max Print Width</b>        | 4.16"  | 4.16"  | BP PR300+ & 600+ : 4.16"<br>BP PR360+ : 6.6"   | 4.09"  |
| <b>Max Print Length</b>       | 40"  | 300 dpi: 40"<br>600 dpi: 20"   | 78"  | 40"  |
| <b>Weight</b>                 | 2kg  | 6 kg   | 9kg  | 15kg   |
| <b>Dimensions (H x W x D)</b> | 7" x 7" x 10"  | 12.3" x 9.5" x 17.1"   | 10.8" x 9.5" x 17.6"   | 12.3" x 10.63" x 19.88"  |
| <b>Connectivity</b>           | Ethernet, USB 2.0, serial and parallel   | Ethernet, USB 2.0, serial and parallel   | Ethernet, USB 2.0, serial and parallel   | Ethernet, USB 2.0, serial and parallel   |
| <b>Application</b>            | Data Comm, Health Care Laboratory, Tissue cassettes, slides Panel, Wire Cable, Sleeves etc.  | Industrial Manufacturing, Electrical, Wire and Cable Identification, Laboratory/Healthcare, Transportation (Aerospace, Rail, Mass Transit), Government, Defense, Data Communication  | Electrical Rail, Mass Transit Aerospace, Data Communication, Military, also for Engraved Plate REplacement   | Regulatory Compliance, Product Identification, Order Processing, Process Tracking Point of Sale, Shipment/Arrival Ticketing  |
| <b>Software</b>               | Labelmark™ Software, Codesoft™ Software  | Labelmark™ Software, Codesoft™ Software  | Labelmark™ Software, Codesoft™ Software  | Labelmark™ Software, Codesoft™ Software  |
| <b>Ribbon Length</b>          | 74m long   | 300m long  | 300m long  | 600m long  |

**BENCHTOP  
INDUSTRIAL  
PRINTERS**



**BBP®11 Label Printer**

The BBP®11 Label Printer is a small, entry level label maker for low to medium volume printing. This printer has a small foot print and is ideal for laboratories that are moving toward print labels and barcode label printers, or general industrial companies with low to medium volume label printing.

**Simple, Efficient Design**

- Specially-designed media rolls and ribbons designed for fast installation and reducing change over time
- Compact size won't clutter your workspace or lab bench

**Performance**

- Sharp 300 dpi printing on labels up to 4" wide
- Fast print speed — up to 3" per second
- Over 800 varieties of labels including external-feed bulk rolls & custom parts
- Centering ribbon spindle virtually eliminates ribbon wrinkling

| Catalog # | Description          |
|-----------|----------------------|
| BBP11-34L | BBP®11 Label Printer |

**Brady IP™ Thermal Transfer Printer**

The Brady IP™ Printer redefines power and ease-of-use in thermal transfer printing. Our most popular benchtop solution, the IP™ Printer utilizes smart chip technology allowing the printer, ribbon, media roll and PC software to communicate. This reduces set up time, reduces change-out time and reduces calibration label waste.

**Faster Change-outs and Less Waste**

- Load Brady material and the software automatically recognizes it
- Hassle-free drop-in media rolls install in a snap

**More Performance**

- Designed for up to 5000 labels per day at 12 hrs / 5 days per week operation
- Fast print speed – up to 8 inches per second

**Hassle-Free Operation**

- Perfect for users who are new to thermal transfer printing

| Catalog # | Description                            |
|-----------|--|
| BP-IP300  | Brady IP™11 Printer - 300 DPI Standard |
| BP-IP600  | Brady IP™11 Printer - 600 DPI Standard |





**BENCHTOP  
INDUSTRIAL  
PRINTERS**



**Bradyprinter™ PR Plus Printer**

The Bradyprinter™ PR Plus Printer is Brady's High Performance Thermal Transfer Printer for your cable identification needs. This industrial printer is capably suited to print Heatex products, wire markers, and polyester labels where the material has a long life expectancy.

**Easy to Use**

- Easy-to-read graphic and alphanumeric LCD menu display with convenient navigator pad and backlit graphic display for fast, easy access to menu options
- Higher printhead heat settings for optimum print quality with Brady materials

**Create, print, and change labels quickly and easily**

- Print registration is fast and easy when changing media types to ensure sharp, professional printing on every job
- Compatible with Brady label design software for fast, accurate, consistent label formatting

**Durable Industrial Design**

- Rugged design with metal cover protects the printer and your materials
- Simplified maintenance with field-installable parts and on-board "one-tool"

| Catalog # | Description                        |
|-----------|------------------------------------|
| BP-PR300+ | Bradyprinter™ PR Plus Printer 300+ |
| BP-PR360+ | Bradyprinter™ PR Plus Printer 360+ |
| BP-PR600+ | Bradyprinter™ PR Plus Printer 600+ |



**BBP®16 Label Printer**

The durable BBP®16 Label Printer is a complete, one-stop labeling solution. With specialized software and the ability to print on a leading range of materials, the BBP®16 Thermal Transfer Label Printer works with uncompromising quality at your convenience.

**Superior Performance**

- Distinctively clear thermal transfer print at 600dpi high resolution
- Able to print labels as small as 4mm in size
- Print speed at up to 4"/second

**Ease of Use**

- Available with additional options to increase efficiency
- Ability to use a wide range of Brady Label materials
- With large liquid crystal display and 13 selectable languages such as Japanese, English, Chinese and Korean

| Catalog #     | Description                                    |
|---------------|--|
| BBP 16        | BBP®16 TT Printer 600DPI 4inch                 |
| BBP 16-PO KIT | BBP®16 TT Printer 600DPI 4inch, Peel-Off Kit   |
| BBP 16-REG CT | BBP®16 TT Printer 600DPI 4inch, Regular Cutter |
| BBP 16-HV CT  | BBP®16 TT Printer 600DPI 4inch, Heavy Cutter   |

## SCANNERS

# BARCODE SCANNERS



Brady offers several different barcode scanner solutions to meet your data collection and tracking needs. All of the scanners uses the latest 2D Imaging Camera technology and enables full omnidirectional decoding of both 1D (linear) and 2D (data matrix) barcodes, allowing flexibility in label design. A variety of barcode scanner accessories are also available, including battery chargers, long life battery handles, and more.



### Features & Benefits

- Dual-Field Optics - expands the reading range of the imager by providing two unique fields of view, a high-density field and a wide angle field, in one device
- Glare Reducing Technology - makes reading bar codes on shiny surfaces, mobile devices, or curved surfaces, quick and easy
- Modular Design - allows for an easy transition from tethered to wireless or palm to handled
- Multiple Good Reader Indicators - ensures that the user is aware of a 'good read', regardless of the environment they are used in
- Small Footprint - designed with the users' work environment in mind
- Durability - built to last and withstand the cleaning agents used in most industries
- Power Management - low power consumption, thus limiting the battery drain



| Scanner Model                               | CR900FD | CR1400 | CR2600 | CR3500 |
|---|---------|--------|--------|--------|
| <b>Dual Field Optics</b>                    |         | ✓      | ✓      | ✓      |
| <b>Reads 1D and 2D bar codes</b>            | ✓*      | ✓      | ✓      | ✓      |
| <b>Anti-glare illumination technology</b>   |         | ✓      | ✓      | ✓      |
| <b>Modular design</b>                       |         |        | ✓      | ✓      |
| <b>Audible and LED 'good read' feedback</b> | ✓       | ✓      | ✓      | ✓      |
| <b>Vibration 'good read' feedback</b>       |         | ✓      | ✓      | ✓      |
| <b>Walk-away prevention</b>                 |         |        | ✓      | ✓      |
| <b>Wireless via Bluetooth®</b>              |         |        | ✓      | ✓      |
| <b>FIPS compliant option available</b>      |         |        | ✓      | ✓      |
| <b>Wired via RS232 or USB</b>               | ✓       | ✓      | ✓      | ✓      |
| <b>Wired via PS/2</b>                       |         |        | ✓      | ✓      |
| <b>Disinfectant ready plastics (Lexan)</b>  |         | ✓      | ✓      | ✓      |
| <b>IP Rating 54 or higher</b>               | ✓       | ✓      | ✓      | ✓      |
| <b>Drop tested to 5' or higher</b>          | ✓       | ✓      | ✓      | ✓      |
| <b>Colour Options</b>                       |         | ✓      |        |        |

\*Upgradable to read 2D barcode

BARCODE SCANNERS



**Code Reader™ 900FD**

Simple, fast and affordable, the Code Reader™ 900FD scanner (CR900FD) is an entry-level, area imaging barcode reader with flexible decoding capabilities.

- High speed, omnidirectional imaging of 1D bar code symbologies
- Future proof investment with upgradeability to stacked and 2D bar codes with the purchase of a license key
- Wide Area Image Sensor
- Manual or Automatic triggering
- 2 programmable indicators: LED and tone
- Reads bar codes reliably off cell phone screens
- Low power consumption

| Catalog # | Description                          |
|-----------|--------------------------------------|
| CR900FD   | 1D, Dark Gray, 6-Ft USB Cable, Stand |



**Code Reader™ 1400**

Extremely fast, reliable, and more affordable than ever, the Code Reader™ 1400 (CR1400) is a compact, rugged, barcode reader.

- High speed, omnidirectional reading of 1D, 2D, Postal bar codes and OCR
- Dual field optics, both high density and wide field in the same unit
- Glare reduction technology for reading codes on shiny surfaces
- Manual or automatic triggering
- 3 programmable indicators: vibration mode, LED and tone
- Reads bar code reliably off cell phone screens
- Data editing and parsing with JavaScript
- Low power consumption
- Disinfectant ready, IP54 housing
- Available in dark and light gray

| Catalog #       | Description                                |
|-----------------|--|
| CR1400 LG       | Light Gray, Core Unit Only                 |
| CR1400 LG C/USB | Light Gray, 6-Ft Straight USB Cable        |
| CR1400 LG C/S   | Light Gray, 6-Ft Straight USB Cable, Stand |
| CR1400 DG       | Dark Gray, Core Unit Only                  |
| CR1400 DG C/USB | Dark Gray, USB, 6-Ft Straight USB Cable    |
| CR1400 DG C/S   | Dark Gray, 6-Ft Straight USB Cable, Stand  |





### Code Reader™ 2600

Easy to use and lightweight, the Code Reader™ 2600 (CR2600) is a high performing barcode reader.

- Lightweight, ergonomic models in palm and handled configurations
- Durable, quick-release rechargeable battery cartridges
- Battery status LED indicators with fuel gauge
- User feedback with vibration, audible tones and LED
- Patented dual field optics, both high density and wide field in the same unit
- Patented glare reduction technology for reading codes on shiny surfaces
- Unequaled performance on rounded, curved and shiny surfaces
- Multiple programmable buttons for customized workflow processes
- Easy to clean, disinfectant ready, IP65 housing
- Paging button to assist in locating reader (Charging Station with embedded modem option only)

| Catalog #     | Description   |
|---------------|---|
| CR2600 HD     | 2D Scanner, HandHeld, Bluetooth, Battery  |
| CR2600 HD KIT | 2D Scanner, Handle, Bluetooth, Battery, Charging Station With Embedded Modem & USB Charge Cable |
| CR2600 PM     | 2D Scanner, Palm, Bluetooth, Battery  |
| CR2600 PM KIT | 2D Scanner, Palm, Bluetooth, Battery, Charging Station With Embedded Modem & USB Charge Cable   |



### Code Reader™ 3500

This barcode scanner offers the same barcode reading technology as the Code Reader™ 2600 scanner, but also features a graphic display and rugged keyboard. It allows you to view the scanned data and maximize the scanner for added functionality.

- Dual field optics, both high density and wide field in the same reader
- Reflection and glare reducing illumination
- Lightweight, ergonomic, fully-mobile modular design (hand held, handle, presentation stand)
- Rapid battery replacement, multiple battery formats and charging options
- User feedback with vibration and/or audible tones
- Unequaled performance on rounded, curved, and shiny surfaces
- Over 10 MB of batch data and JavaScript memory
- Powerful data management capability via JavaScript
- Firmware is field upgradeable

| Catalog #     | Description                               |
|---------------|---|
| CR3500        | 2D Scanner, Core Unit Only                |
| CR3500 BT B   | 2D Scanner, Bluetooth, Battery,           |
| CR3500 BT B/C | 2D Scanner, Bluetooth, Battery, USB Cable |
| CR3500 BH2    | 2D Scanner, BH2 Handle, No Cable          |

## CONTACT US

Brady's global presence makes it easy for you to do business with us wherever you are. To find out more about Brady and our products, please visit us at [www.bradyid.com.sg](http://www.bradyid.com.sg) or email us at [ContactUs\\_SA@bradycorp.com](mailto:ContactUs_SA@bradycorp.com).

### APAC Offices

#### AUSTRALIA

Telephone: (612) 8717 6300

#### CHINA

Telephone: (86) 21 6100 6588

#### HONG KONG

Telephone: (852) 2216 9283

#### INDIA

Telephone: (91) 80 66582 900

#### INDONESIA

Telephone: (60) 4 646 2700

#### JAPAN

Telephone: (81) 042 655 2535

#### MALAYSIA

Telephone: (60) 4 646 2700

#### PHILIPPINES

Telephone: (65) 6477 7261

#### SINGAPORE

Telephone: (65) 6477 7261

#### SOUTH KOREA

Telephone: (02) 2192 0700

#### TAIWAN

Telephone: (86) 2 2657 6108

#### THAILAND

Telephone: (66) 2 793 9211

#### VIETNAM

Telephone: (66) 2 793 9211

### International Offices

#### EUROPE

Website: [www.bradyeurope.com](http://www.bradyeurope.com)

#### NORTH AMERICA

Website: [www.bradyid.com](http://www.bradyid.com)

## Track & Trace Solution

